

# MONTHLY MEMBERSHIP PROGRESS REPORT

LOCATION PENNSYLVANIA

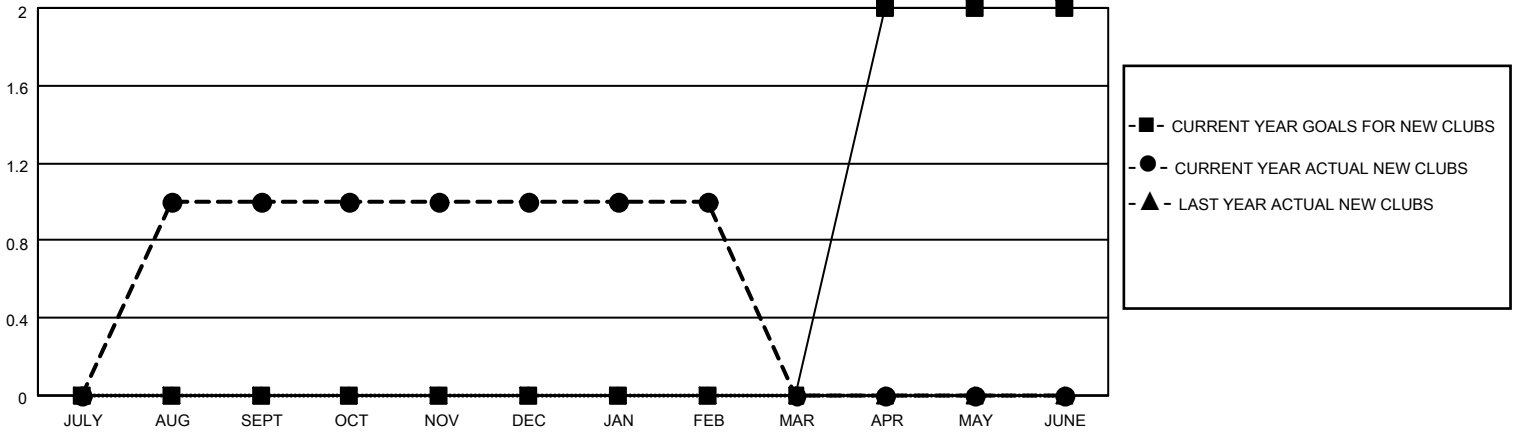
District 14 K

Results as of: 2/28/2023

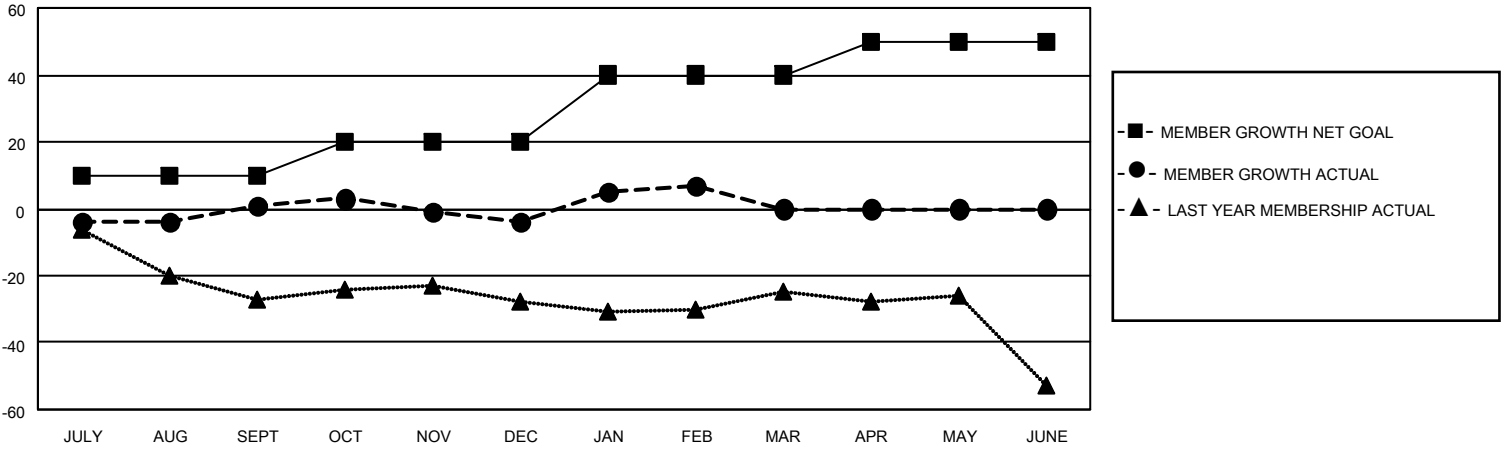
Clubs			
RESULTS FOR 2022-2023			
QUARTER	NEW CLUB GOAL	NEW CLUBS	DROPPED CLUBS
JULY/AUG/SEPT	0	1	1
OCT/NOV/DEC	0	0	0
JAN/FEB/MAR	0	0	0
APR/MAY/JUNE	2	0	0

Members			
RESULTS FOR 2022-2023			
QUARTER	MEMBER GROWTH NET GOAL	MEMBER GROWTH ACTUAL	DROPPED MEMBERS ACTUAL (including transfers)
JULY/AUG/SEPT	10	32	31
OCT/NOV/DEC	10	9	14
JAN/FEB/MAR	20	19	4
APR/MAY/JUNE	10	0	0

**GOALS AND ACTUAL NEW CLUBS CUMULATIVE**



**GOALS AND ACTUAL MEMBERS CUMULATIVE**



DROPPED CLUBS: 1	
<b>DROPPED MEMBERS</b>	
DECEASED	7
CLUB CANCELLED	0
OTHER	42
<b>TOTAL</b>	<b>49</b>

16 CLUBS OF 29 ADDED 1 OR MORE NEW MEMBERS

[CLICK HERE FOR CUMULATIVE MEMBERSHIP DATA](#)

<u>GENDER DISTRIBUTION</u>	
MALE	466 (64.54%)
FEMALE	255 (35.32%)
NON BINARY	0 (0.00%)
PREFER NOT TO ANSWER	1 (0.14%)
<hr/>	
TOTAL FAMILY UNIT MEMBERS	97
<hr/>	
FAMILY MEMBERS PAYING HALF DUES	50